

INSTRUCTIONS FOR USE

The Droplet[®] Genteel[®] lancing device is used with disposable sterile lancets to draw capillary blood from the fingertip or alternate sites for blood glucose testing or other utilizing small amounts of blood.

The Droplet Genteel lancing device is for single patient use only.

Please read these instructions from beginning to end before using for the first time. Retain this manual for future reference. In addition to reading the instructions, watch the quick start video at www.mydropletgenteel.tips

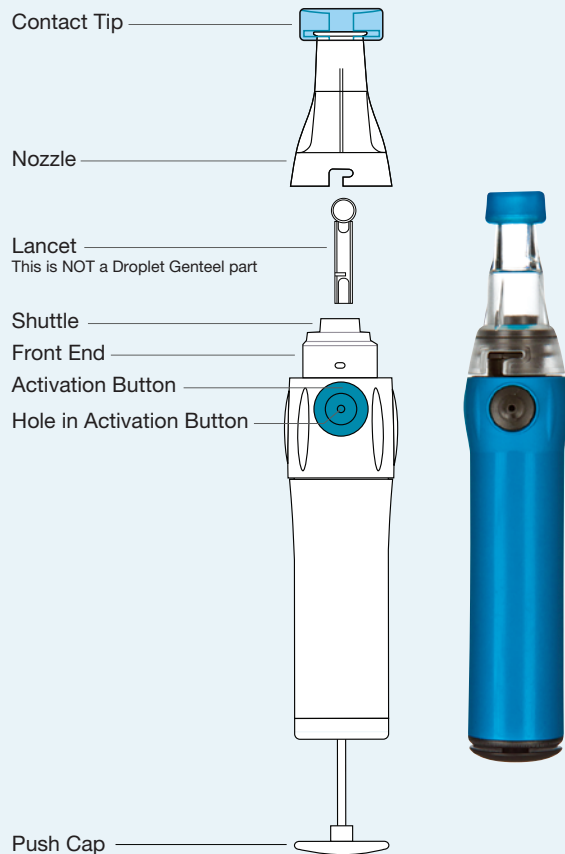
Your Droplet Genteel lancing device comes with:

Droplet Genteel lancing device

6 Contact Tips

If any of these items are missing, appear damaged, or you have any concerns, please contact Customer Service at info@mydroplet.com or call 1-877-660-1900.

Droplet Genteel lancing device parts



The Droplet Genteel lancing device is designed for single user only. Never share the lancing device or lancets. Using the Droplet Genteel lancing device, any of its parts, or any lancing device on multiple individuals may increase the risk of inadvertent transmission of bloodborne pathogens.

We recommend that you wash your hands with soap and water before and after handling the Droplet Genteel lancing device to prevent the transfer of bloodborne viruses or infectious agents.




Always use a new lancet for each test. Never reuse lancets.

Precaution

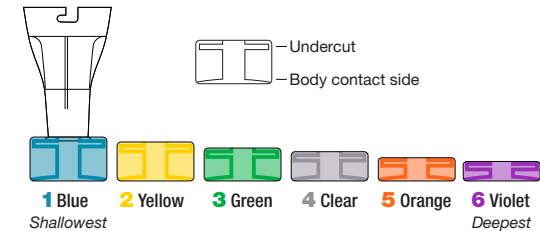
Always follow the instructions provided with your meter for blood glucose testing.

Do not store the Droplet Genteel lancing device in high temperatures above 150°F/66°C, typical of the dashboard of a car on a hot, sunny day with the windows rolled up.

Setting up Droplet Genteel for use

- 1 Droplet Genteel lancing device with a Contact Tip on the Nozzle

- 2 A sterile lancet

- 3 Alcohol swab and/or tissue to clean test site


Choosing the Contact Tip



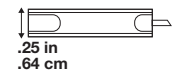
The Droplet Genteel lancing device comes with 6 Contact Tips, different in color and thickness. They range from #1/thickest (Blue) through #6/Thinnest (Violet). These thickness differences allow you to adjust the depth of penetration of the lancet. To minimize discomfort, use the shallowest depth (thickest, lowest number) Contact Tip that still produces the right amount of blood.

Droplet Genteel comes factory-installed with the Blue #1 Contact Tip. This is the thickest Contact Tip and allows for the shallowest depth penetration. We recommend that you try the Blue factory-installed Contact Tip the first time you use Droplet Genteel. Changing the Contact Tip to a higher number will allow a deeper puncture depth.

How to know if a lancet will fit with Droplet Genteel

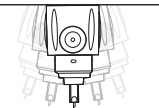
Shape

Is the base of the lancet square? Droplet Genteel was designed to work with most square shaft lancets.



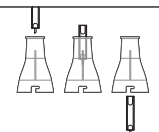
Fit

Does the lancet fit and stay in the shuttle, even if you shake the device?



Size

Remove the Contact Tip from the Nozzle. Hold Nozzle with the small side up. Drop the lancet down through the Nozzle. Does the lancet pass all the way through?



If your lancet does not pass these three tests, it will not work with Droplet Genteel. However, passing these tests only means it will fit into Droplet Genteel's shuttle, but does not guarantee its overall quality or that the needle size is uniform.

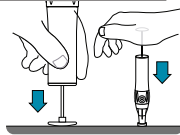
The Droplet Genteel lancing device works with Droplet Personal Lancets. It is recommended that you use Droplet 30G Personal Lancets with the Droplet Genteel lancing device.

Installing the Contact Tip onto the Nozzle

- 1 Place the Contact Tip on a clean, hard, flat surface, like a tabletop.
- 2 There are two sides to the Contact Tip—the smooth side that goes against your skin and the side with the grooves that goes onto the Nozzle. Make sure the side with the grooves is facing up. Use a slight back and forth (rotating) motion to gently push the Nozzle flat into the Contact Tip. The lip on the Nozzle goes into the groove on the Contact Tip.
- 3 The Contact Tip may also be installed by stretching it over the Nozzle.

Testing from the fingertip

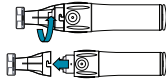
- 4 Select area to be lanced and wipe with an alcohol swab and/or tissue.
- 5 Cock Droplet Genteel by pushing in the Push Cap, taking care not to hold the Activation Button while priming (you will hear a click if Droplet Genteel is cocked correctly).



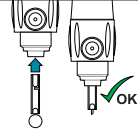
DO NOT HOLD ONTO THE ACTIVATION BUTTON WHILE COCKING DROPLET GENTEEL, AS THIS WILL DISENGAGE THE LOCKING MECHANISM AND DROPLET GENTEEL WILL NOT COCK.



- 6 Remove the Nozzle by twisting counterclockwise, then pull it off.



- 7 Insert a new, sterile lancet and carefully twist off its protective cap.
NOTE: Make sure the lancet is inserted correctly into the lancing device. It is okay for the lancet to turn slightly during protective cap removal.



- 8 Replace the Nozzle by lining up the body's pins with the Nozzle slots and rotate clockwise.



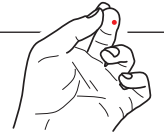
- 9 Place Droplet Genteel, gently, but firmly, against the fleshy side portion of your middle, ring, or pointer finger. Look to be sure there are no spaces between the Contact Tip and your skin.



- 10 Press the Activation Button and continue to hold firmly on the test site. Count to 10 or until you see a blood drop form when you look inside the Nozzle window.

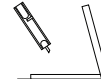
- 11 Release the Activation Button.

- 12 Pull Droplet Genteel away from your skin



Removing the Lancet

- 13 Cock Droplet Genteel by pushing in the Push Cap at the back of the device.



- 14 Twist and take off the Nozzle.

- 15 Take out the lancet and place it into the sharps container.



Alternate site testing

Alternate site testing means using a part of your body other than the fingertips to obtain blood for blood glucose testing. Always check with your doctor to see if and when alternate site testing is right for you.

If alternate site testing is right for you, choose a penetration site on a soft, fleshy area of your arm, or other recommended site, away from bone, and free of visible veins and hair. Obtain a sample following Steps 4-12, the same way as shown in "Testing from the fingertip".

Cleaning Droplet Genteel Lancing Device

After every use

We recommend using a disinfectant on Droplet Genteel to help prevent the transfer of bloodborne viruses or infectious agents. We recommend wiping the lancing device, including the inside and outside of the Nozzle and Contact Tip, with 70% isopropyl alcohol. After wiping, allow Droplet Genteel to air dry completely.

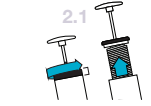
1 Surface cleaning:

Before every use, wipe the outside of the device with a clean damp cloth.

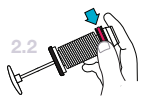
IMPORTANT: If the Push Shaft rises past its halfway point – while holding the Activation Button, this may be a vacuum leak caused by dirt or other contaminants inside Droplet Genteel. If you experience this vacuum loss symptom – perform (2). If symptom persists – perform (3). If cleaning doesn't resolve vacuum leak, call customer service 1-877-660-1900.

2 Quick clean (inside):

2.1 Remove Piston Assembly: De-prime Droplet Genteel by pressing Activation Button. Twist Piston Assembly base counter-clockwise until you can pull it out of the Vacuum Tube.



2.2 O-ring Wipe: Wipe the O-ring on the Piston Assembly with your clean finger to remove surface dirt or other contaminants.



3 Deep clean (inside):

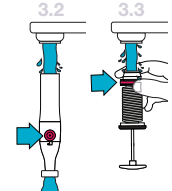
3.1 Remove Piston Assembly: Repeat step 2.1

3.2 Flush Vacuum Tube: Run fast moving, warm water through the Vacuum Tube and out the Nozzle while repeatedly pressing the Activation Button.

3.3 Flush Piston Assembly: While running the Piston Assembly under fast-moving, warm water repeat 2.2.

3.4 Dry: Let Droplet Genteel air dry thoroughly. Do not reassemble Droplet Genteel with moisture in the Vacuum Tube.

3.5 Reassemble: Put Piston Assembly back inside the Vacuum Tube and twist base clockwise until it locks into place securely. Verify device functions as intended.



120 Day Satisfaction Guarantee

When you use the Droplet Genteel lancing device with Droplet 30G Personal Lancets and in accordance with the instructions for use, we offer a 120 day satisfaction guarantee.

Please visit www.mydropletgenteel.tips within 30 days of purchase to register your device.

If you are unsatisfied with your Droplet Genteel lancing device for any reason, please call us at 1-877-660-1900 or email us at info@mydroplet.com to receive a one-time replacement device or refund within 120 days of purchase.

Please do not attempt to return product without prior authorization. Any Droplet Genteel lancing device returned without prior authorization will be refused.

Manufactured for:

HTL-STREFA S.A.
ul. Adamówek 7
95-035 Ozorków, Poland
T: +48 42 270 00 10
F: +48 42 270 00 20
www.htl-strefa.com
info@htl-strefa.pl
Made in the United States

Distributed by:

HTL-STREFA, Inc.
3005 Chastain Meadows Pkwy,
Suite 300
Marietta, GA 30066, USA
T: +1-770-528-0410
F: +1-770-528-0411
www.mydroplet.com
info@mydroplet.com

730/9150/09/2020

20201012_Droplet Genteel Lancing Device_Website IFU

If you need troubleshooting assistance or more help with your Droplet Genteel lancing device,

**PLEASE DO NOT WAIT
TO CONTACT US.
WE ARE HERE TO HELP!**

1-877-660-1900 info@mydroplet.com